

# KOMATSU



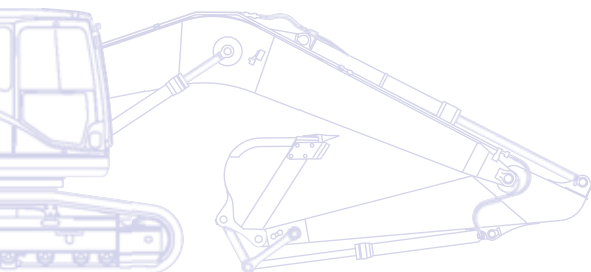
**PC**  
**350**



## Hydraulic Excavator

# **PC350LC-8**

## **Long Reach**



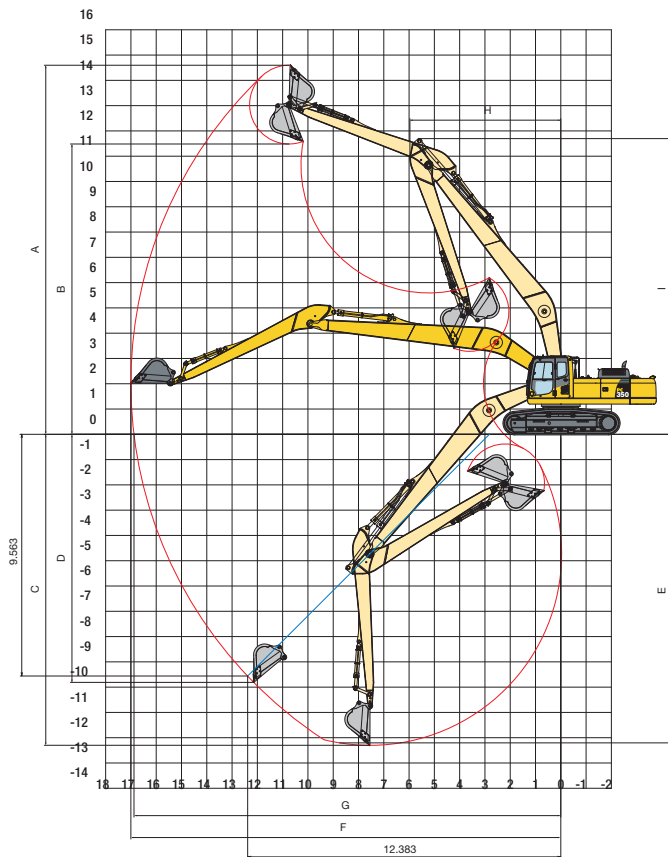
**ENGINE POWER**  
194 kW / 260 HP @ 1.950 rpm

**OPERATING WEIGHT**  
ca. 42.000 kg

**BUCKET CAPACITY**  
max. 1,1 m<sup>3</sup>

# Hydraulic Excavator

## PC350LC-8 Long Reach



### WORKING RANGE

Arm length	6.025 mm
Boom length	10.000 mm
A Max. digging height	14.595 mm
B Max. dumping height	11.480 mm
C Max. digging depth	12.300 mm
D Max. vertical wall digging depth	9.445 mm
E Max. digging depth for 2.400 mm level	12.200 mm
F Max. digging reach	17.000 mm
G Max. reach at ground level	16.880 mm
H Min. swing radius	5.970 mm
I Max. height of minimum swing	11.700 mm

### IN ADDITION TO THE EQUIPMENT FITTED TO THE STANDARD PC350LC-8:

Long Reach boom and arm	●	● standard equipment
Automatic greasing system	●	○ optional equipment
Sealed bucket linkage	●	
Prepared for hydraulic quick-coupler	●	
HCU for tilting bucket attachment	●	

### OPERATING WEIGHT (APPR.)

Triple grouser shoes	Operating weight	Ground pressure
700 mm	42.130 kg	0,64 kg/cm <sup>2</sup>
800 mm	42.510 kg	0,56 kg/cm <sup>2</sup>
850 mm	42.700 kg	0,54 kg/cm <sup>2</sup>

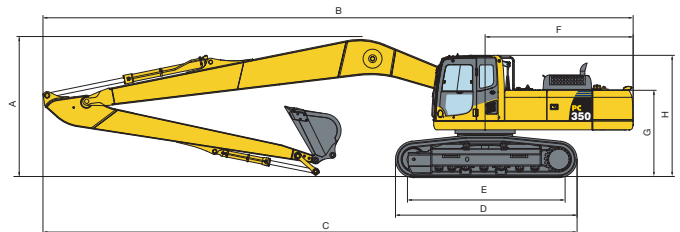
Operating weight, including work equipment, 870 kg bucket, operator, lubricant, coolant, full fuel tank and the standard equipment.

### BUCKETS

Bucket type	Material density	Max. bucket width	Max. bucket weight
General purpose 0,93 m <sup>3</sup>	1,8 ton/m <sup>3</sup>	1.000 mm	780 kg
General purpose 1,11 m <sup>3</sup>	1,2 ton/m <sup>3</sup>	1.200 mm	890 kg
Ditch cleaning bucket	1,1 ton/m <sup>3</sup>	2.100 mm	890 kg*

Values shown are in accordance with EN474-5:2006.

\* Maximum load at end of arm (bucket + payload) allowed is 2.645 kg



### TRANSPORT DIMENSIONS

A Overall transport height	3.570 mm
B Overall transport length	15.050 mm
C Transport length	13.640 mm
D Track length	4.955 mm
E Track length on ground	4.030 mm
F Tail swing radius	3.775 mm
G Machine tail height (to top of counterweight)	2.580 mm
H Overall cab height	3.130 mm